



First UMC Vision Cast

January 26, 2025

Since 1807, First United Methodist Church has been a cornerstone of Rochester, fostering fellowship, worship, and shared hope in the saving love of Jesus Christ, a legacy we continue to build upon and share today.



“We are one big family with a shared purpose to grow more Christ-like and to keep hope alive in our community and beyond.”

At FUMC, we live out John Wesley's vision that "the world is our parish" by serving as a welcoming hub for community engagement, extending Christ's love through outreach, partnerships, and initiatives that impact lives locally, regionally, and globally.

Annual Lights of Love

Community Photography Show

Red Cross Blood Drives

AA Meetings

Boy Scouts and Cub Scouts

Project Linus

Granite State Choral Society and Granite State Ringers Concerts

UNH Northeast Passage

Rochester Fellowship Kitchen

African Children's Choir

MeCa Concert

Emergency backup facility for the Rochester Child Care Center

And more...

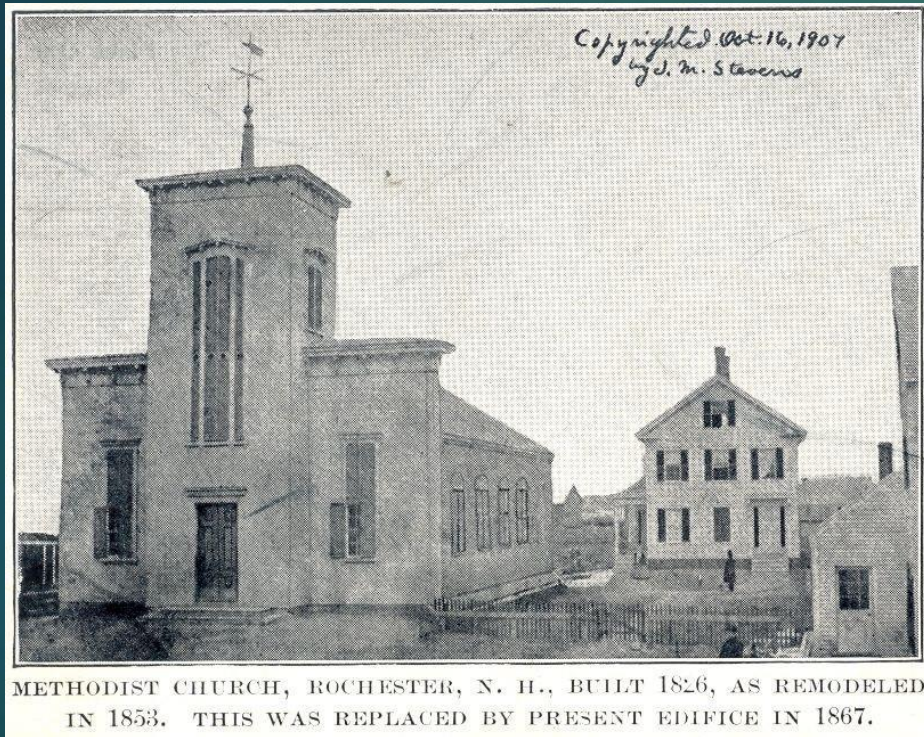


Our steeple is a physical manifestation of hope in the world.

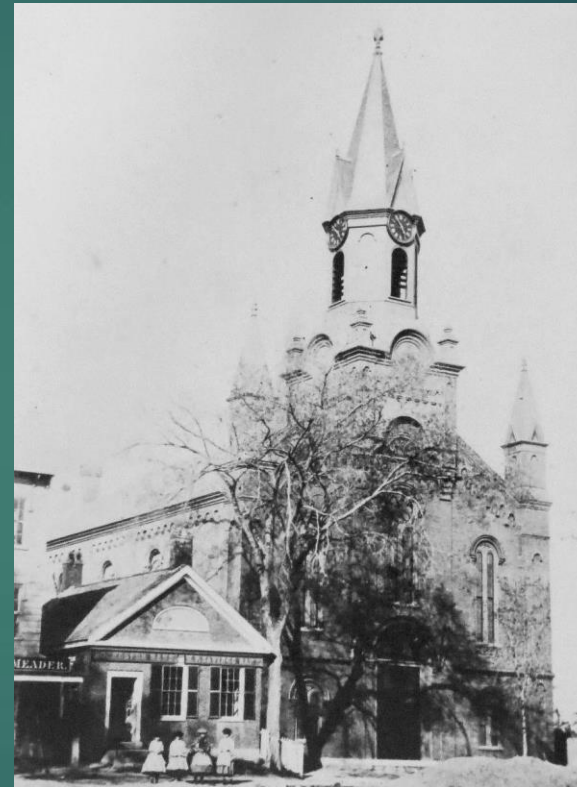
To sustain hope and serve Rochester's needs, we must protect our church by repairing water damage, updating the roof and exterior, and restoring the steeple, a vital beacon of hope.

History of FUMC Building

1826 The first Methodist Chapel erected



1853 Chapel renovated to add the front façade and Center tower.



1867 Chapel torn down to make way for the current building.

THINK ABOUT WHAT THEY MUST HAVE BEEN ENVISIONING BACK THEN.



1998-2000

- New lighting, carpeting, and restoration of the pipe organ in the sanctuary.
- The outside of the old building was redone including the steeple.
- Repointing of the bricks in the front, the building of the new Whitford building.
- The price tag for this work was in the \$950,000 range, equating to about \$1.7 Million today.
- Building worth about \$2.4 Million Today.

THINK ABOUT WHAT THEY MUST HAVE BEEN ENVISIONING BACK THEN.

Project Phases and Timelines

► Phase One: Tower and Clock

Extensive repairs of the tower and clock are needed. This project needs to begin this spring to maintain the steeple's structural integrity.

Estimated Cost: \$600,000-\$900,000



Project Phases and Timelines

► Phase Two: Roof

Our plan is to remove the slate roof. Repair the wood underneath and replace the roof with newer composite materials that resemble slate, are more robust, and cost less.

Estimated Cost: \$600,000-\$900,000



Project Phases and Timelines

► Phase Three: Internal and External Repairs

This would be the final stage of the project once the tower and roof are complete to finish the trim and windows on the outside and repair any internal damage from leaks.

Estimated Cost: \$100,000 - \$140,000



Estimated Total Cost: Approximately \$1.3 to 1.6 Million

Resources

- Unrestricted Trust Funds up to \$100,000
- Capital Campaign for the next 3-5 years
- Grants
- Fund Raising
- Community Support

What is God calling us to do?



Generations before us have faced and accomplished significant projects, and now it is our turn to unite and rise to the challenge of restoring hope for the future.

Your Input and Feedback

- What excites you about what you have heard?
- What concerns you?
- What questions do we need to answer moving forward for this campaign?

